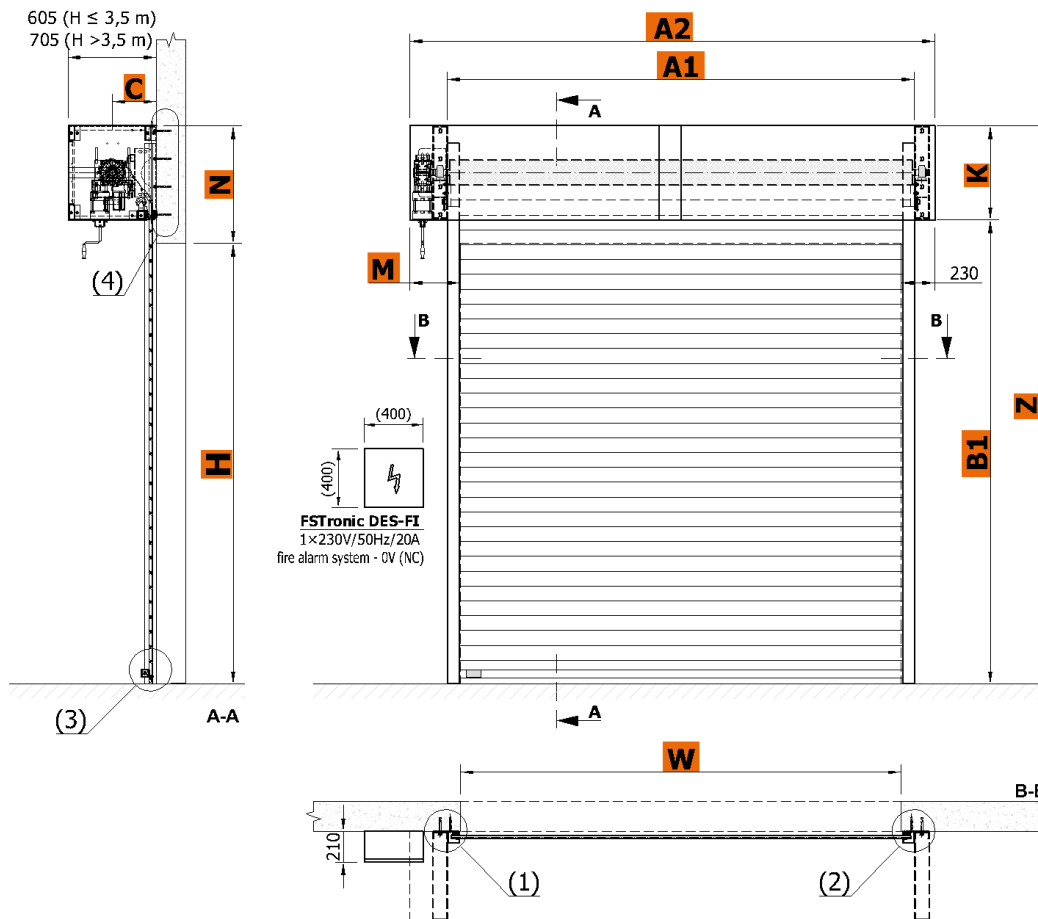




TECHNICAL DATA SHEET ROLLING FIRE SHUTTERS RGS-22 / RGS 22V EW 45 / EW 120

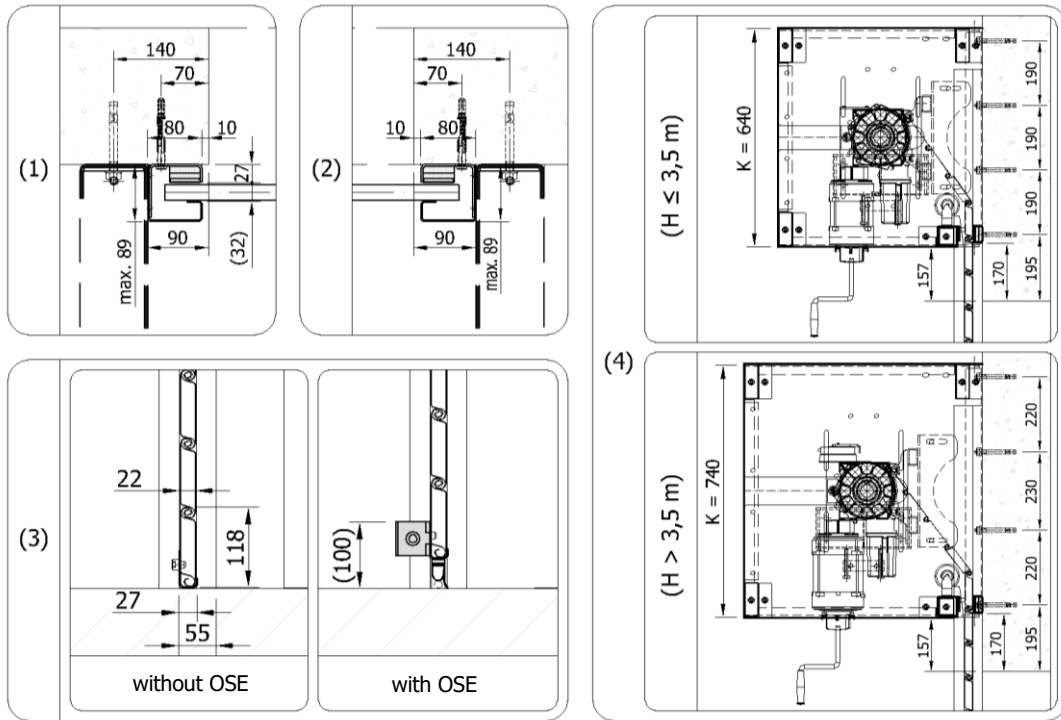
Technical data sheets serve to determine the basic space requirements of rolling fire shutters. Other dimensions or atypical demands can be solved upon request.

RGS-22, EW 45 / RGS 22V, EW 120

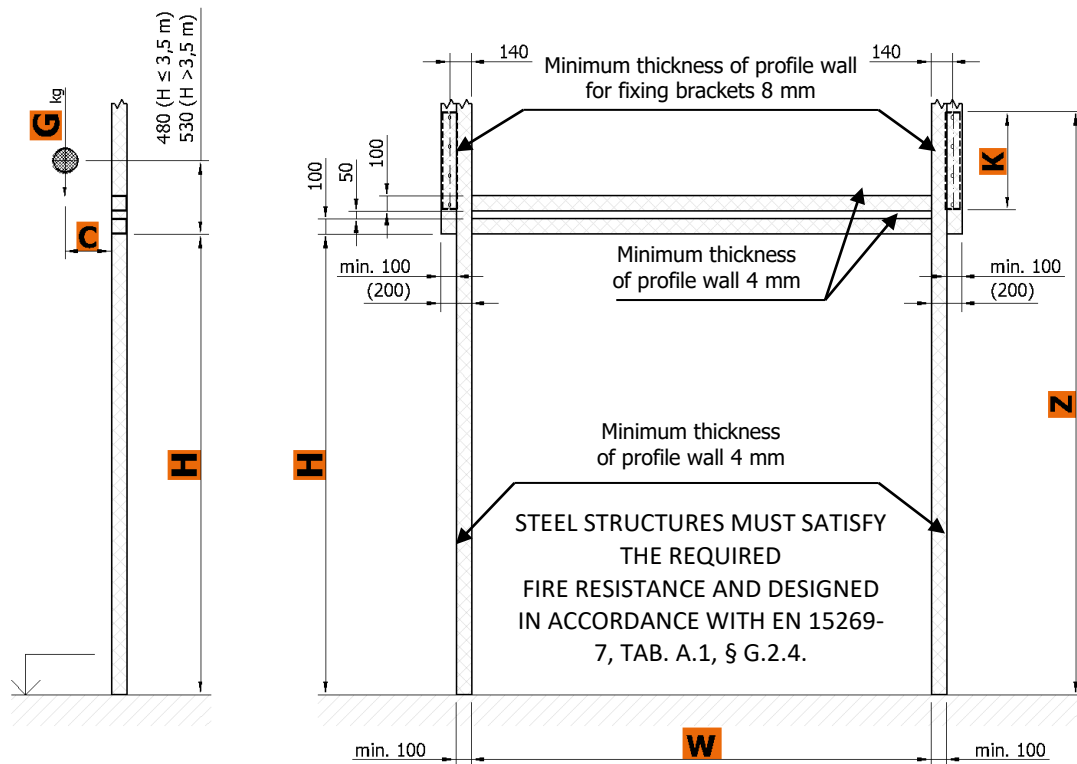


W	opening width	= max. 7200 mm	H	opening height	= max. 7000 mm
Maximum dimensions must be discussed with the manufacturer (maximum width and height cannot be combined)					
A1	internal pitch of bracket	= W + 180 mm	M	space from opening edge	= 345 mm to 385 mm
A2	overall width	= W + 230 mm + M	N	lintel	= 800 mm (H ≤ 3,5 m)
B1	bottom edge of bracket	= H + 160 mm	N	lintel	= 900 mm (H > 3,5 m)
C	axis of roller	= 300 to 340 mm	K	height of brackets	= 640 mm (H ≤ 3,5 m)
Z	overall height	= H + N	K	height of brackets	= 740 mm (H > 3,5 m)

Average weight of slats with filling (RGS 22V, EW 120) = 23,5 kg/m²
Average weight of slats without filling (RGS 22, EW 45) = 21,9 kg/m²



Minimum required dimensions of steel structure



G - on request from the manufacturer

Construction readiness of the opening is secured by the customer according to the requirements of the contractor and depending on the type of jamb and lintel of the opening.

Anchor brackets can be fixed with anchor bolts (concrete, solid brick), or to anchor targets with bolts through wall (foam silicate, gas silicate or breeze (hollow) blocks), or to prepared steel structure with appropriate fire resistance (plasterboard wall, sandwich panels etc.). It is necessary to respect the flatness of the wall and the floor with a tolerance of max. 3 mm/m.

Technical changes reserved.

Would you like to know more? Contact us.

Somati system s.r.o., Jihlavská 510/2c, 664 41 Troubsko
 IČ: 29260159, DIČ: CZ29260159
 www.somati-system.cz

